



**1 Foot**

60 square miles  
19,000 residents  
10,000 jobs



**3 Feet**

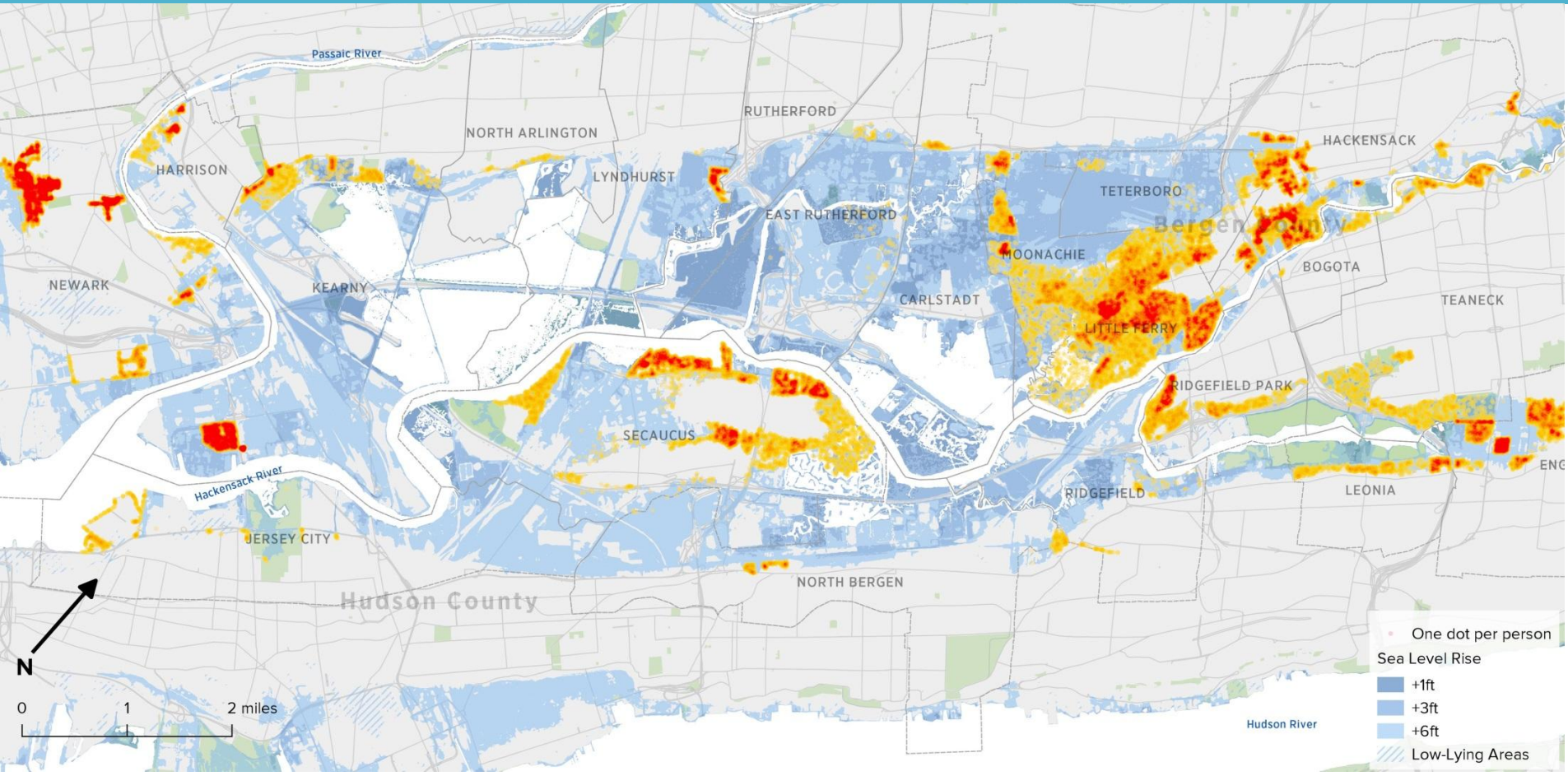
133 square miles  
114,000 residents  
62,000 jobs



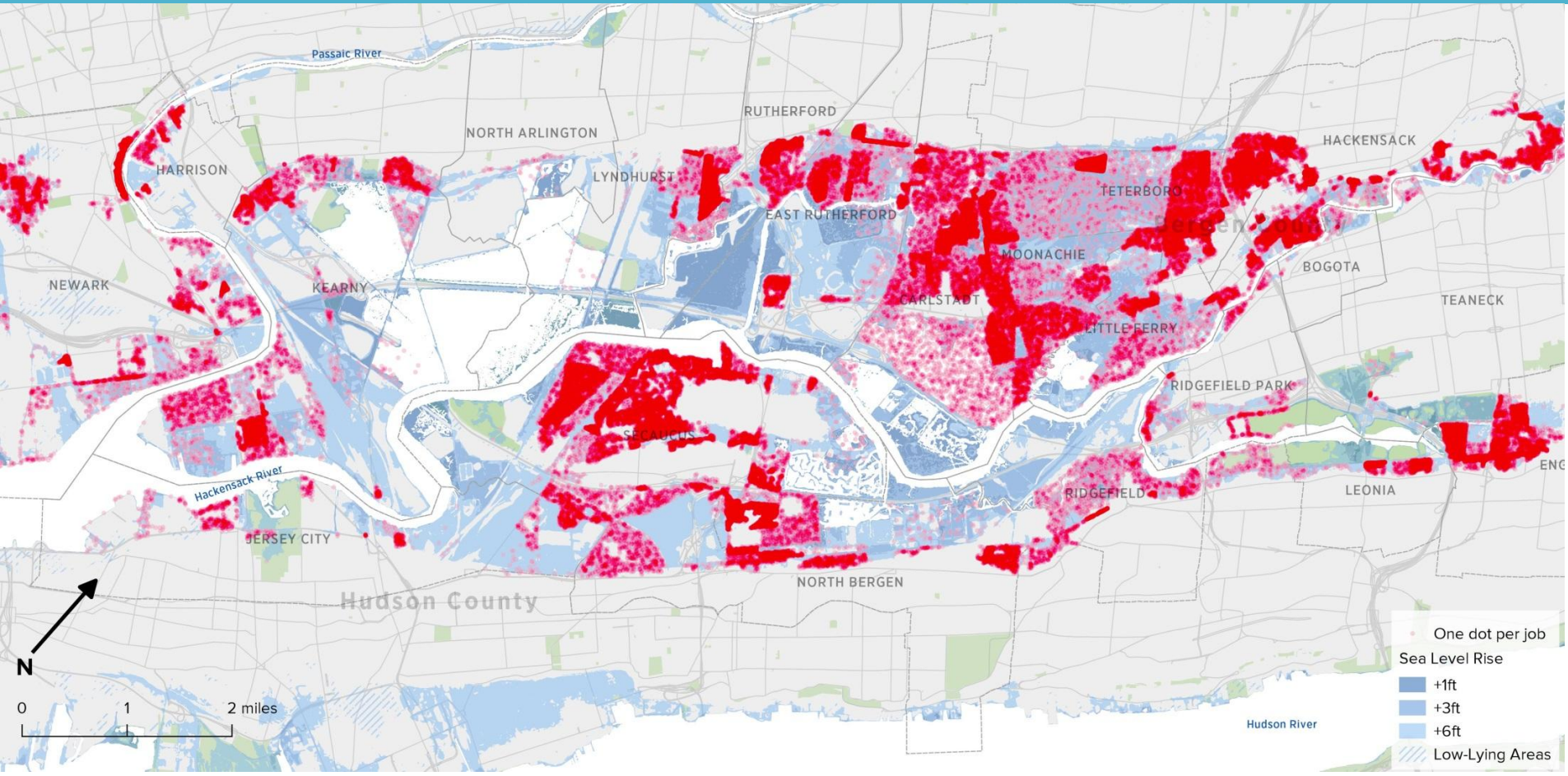
**6 Feet**

280 square miles  
620,000 residents  
363,000 jobs

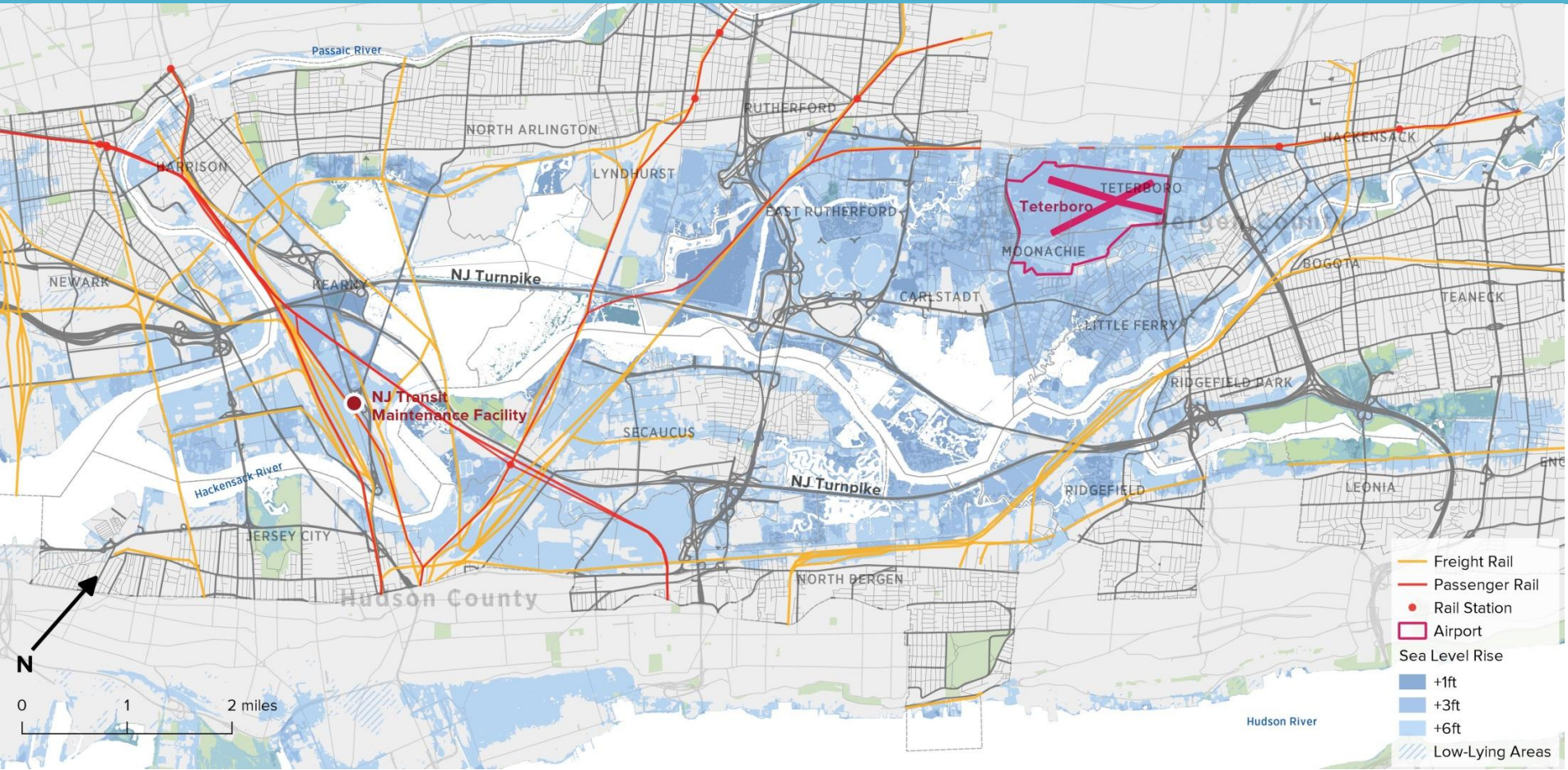
# Communities: Population



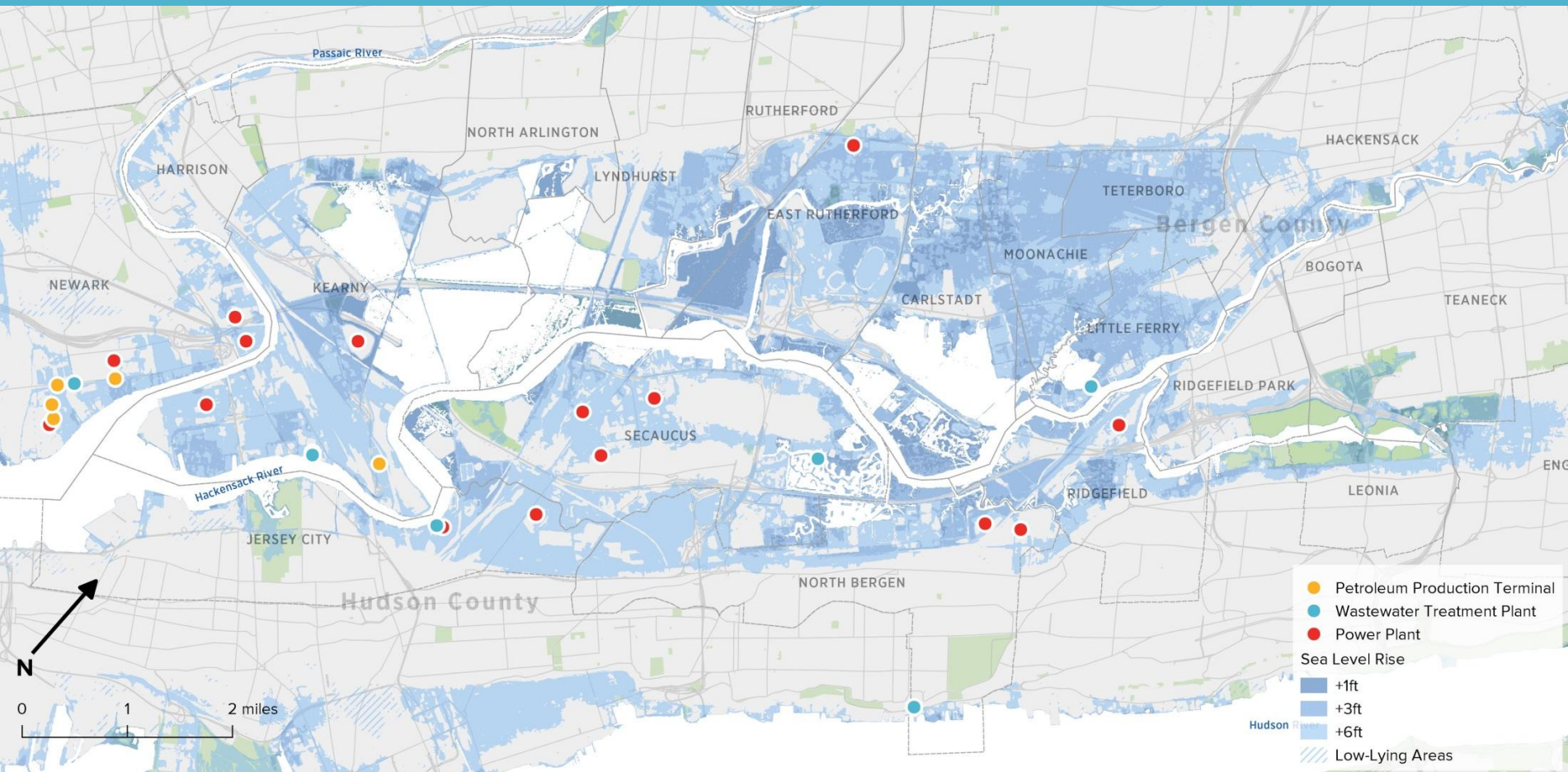
# Communities: Jobs



# Infrastructure: Transportation



# Infrastructure: Critical Facilities



# Natural & Contaminated Land

