

# **Climate Change Policy in New Jersey**

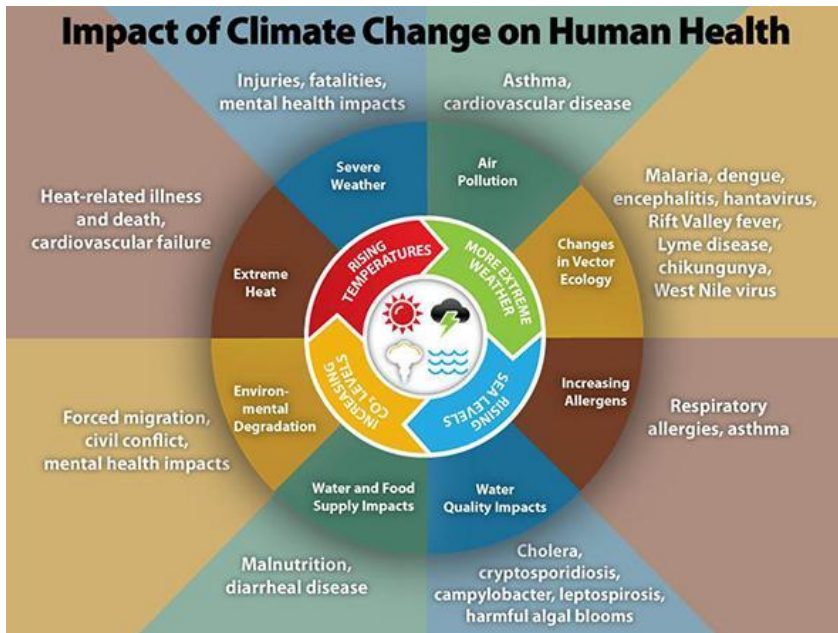
## Opportunities to Improve Quality of Life for All New Jerseyans

September 27, 2017



**Dan Fatton**  
Work Environment Council

# Climate and Health in New Jersey



- **Increased pediatric ER visits** during the warm season associated with ozone (Gleason et al. 2014)
- **Increases in heat-related illness** during the warm season rising over the last decade (NJDOH 2015)
- **Gastrointestinal illness** (hospitalizations) associated with extreme rainfall during warm season (2009-2013) (Gleason 2015)

Projected Climate Change and Health Impacts in New Jersey

Hazard	Climate Impact	Health Impacts
<b>Air Quality Changes</b>	<ul style="list-style-type: none"> <li>• Increased ground-level ozone</li> <li>• Fine particulate matter changes</li> <li>• Pollen and allergen production</li> </ul>	<ul style="list-style-type: none"> <li>• Respiratory illness</li> <li>• Cardiovascular disease</li> <li>• Mortality</li> </ul>
<b>Extreme Heat</b>	<ul style="list-style-type: none"> <li>• Increased frequency and intensity of heat waves</li> </ul>	<ul style="list-style-type: none"> <li>• Heat-related illness and mortality</li> <li>• Exacerbation of existing medical conditions</li> <li>• Greater stress on electricity systems potentially leading to health outcomes associated with power outages</li> </ul>
<b>Precipitation Changes and Storms</b>	<ul style="list-style-type: none"> <li>• Flooding</li> <li>• Storms</li> <li>• Drought</li> <li>• Wildfire</li> </ul>	<ul style="list-style-type: none"> <li>• Injuries and fatalities</li> <li>• CO2 poisoning</li> <li>• Food and water contamination</li> <li>• Stress and mental health impacts</li> <li>• Respiratory illnesses</li> <li>• Mold exposure</li> <li>• Food insecurity</li> </ul>
<b>Ecosystem Changes and Threats</b>	<ul style="list-style-type: none"> <li>• Changes in Disease Vector Reproduction and migration patterns</li> </ul>	<ul style="list-style-type: none"> <li>• Vector borne illnesses</li> <li>• Food and water borne illnesses</li> <li>• Harmful Algae Blooms (HABs)</li> </ul>

# Vulnerable Communities



## Key Message 2: Most Vulnerable at Most Risk

Climate change will, absent other changes, amplify some of the existing health threats the nation now faces. Certain people and communities are especially vulnerable, including children, the elderly, the sick, the poor, and some communities of color.

NATION & WORLD | Posted September 13 | Updated September 14

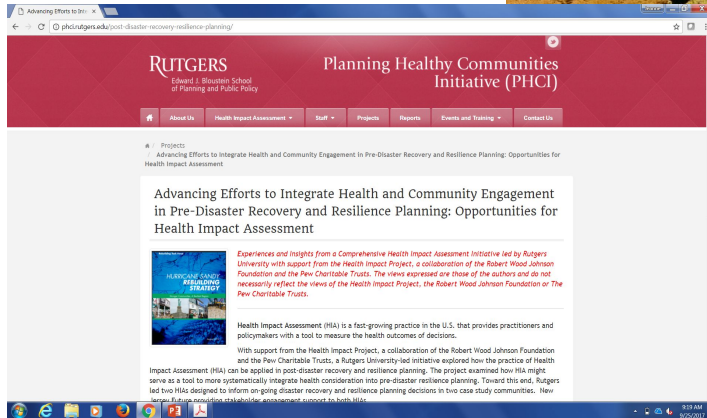
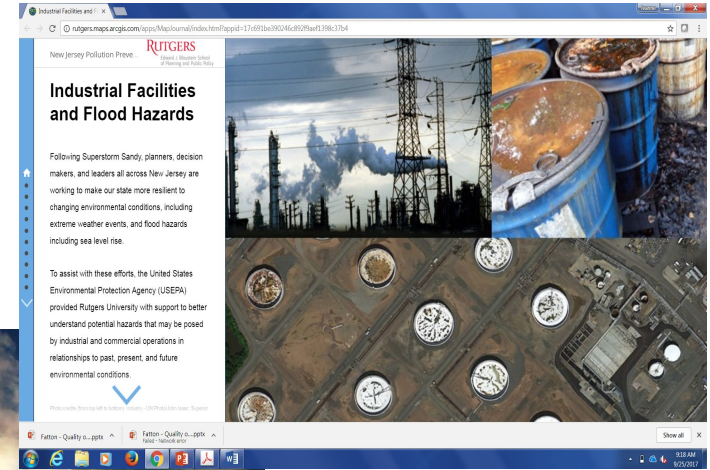
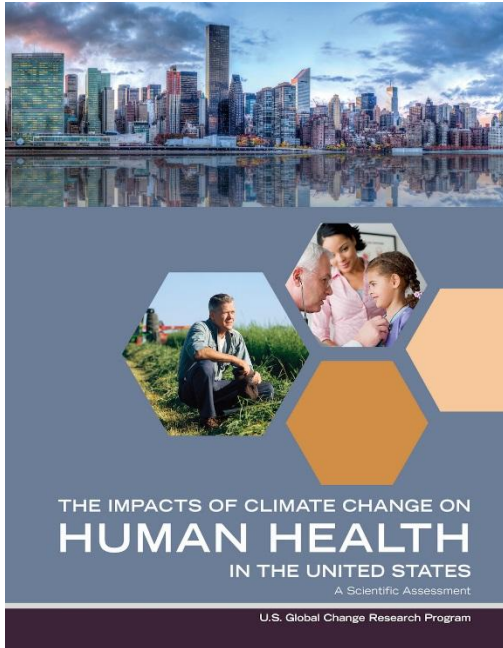
### Deaths of 8 nursing home patients raise concerns about Florida's elderly

The home had no air conditioning because of Hurricane Irma, but it is across the street from an air-conditioned hospital.

BY TIM REYNOLDS AND TERRY SPENCER ASSOCIATED PRESS



# Recommendations



- Act** • Implement specific initiatives identified in consultation with public health community
- Plan** • Integrate climate science and consideration of climate change impacts into existing public health planning, programs and decision making processes
- Assess** • Assess disease burden as a result of a changing climate and identify vulnerable populations and appropriate interventions
- Support** • Develop and assist in the deployment of tools and other resources to support local public health practitioners
- Build Capacity** • Expand the ability of NJ's public health practitioners to undertake interventions to address public health-related climate change impacts

# Mitigation Benefits

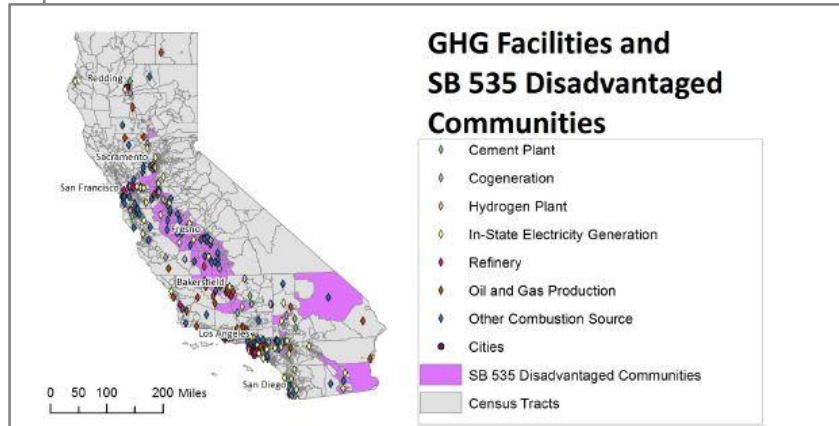
- Reduction of both CO2 **and** traditional air pollutants
- Economics and Jobs
  - Since 2002, the Energy Trust of Oregon > \$1 billion in clean energy investments and consumer savings of > \$1.3 billion on utility bills.
  - Regional Greenhouse Gas Initiative (RGGI) has led to \$1.3 billion of economic value to nine-state region (2012-2014 period of analysis)
    - Investment includes energy efficiency investment, community-based renewable power, assistance to low-income customers to help with electricity bills, and education and job training.
- Sustainable Communities Provisions (CA, OR, NY)
- A livable planet



# Equity Considerations

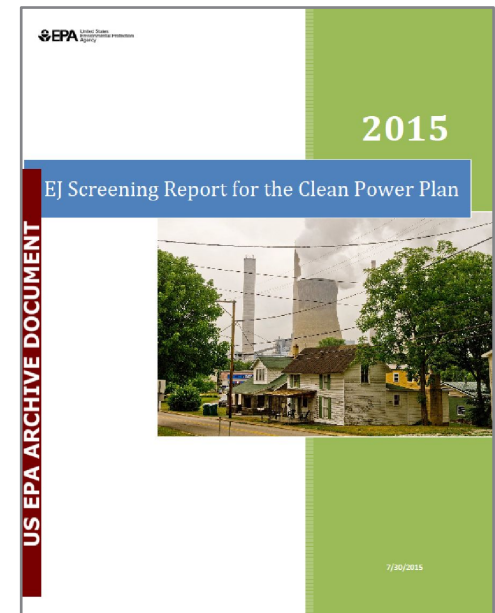
Tracking and Evaluation of Benefits and Impacts of Greenhouse Gas Limits in Disadvantaged Communities: Initial Report

Office of Environmental Health Hazard Assessment  
California Environmental Protection Agency  
February 2017



- Disproportionate number of facilities subject to cap-and-trade program are located in disadvantaged communities.

- *Initial analysis* suggests GHG emissions reductions likely to result in lower pollutant exposures in disadvantaged communities.





50+ organizations  
 30+ clergy  
 750+ petition signatures  
 20+ policy principles

## NJ must **ACT** on climate

- Reduce GHG Emissions
- Increase Clean Energy
- Create Good Jobs

# 71%

want NJ Governor  
 to be a **leader on climate**

\*Global Strategies Group, Jan. 2017

