

May 20, 2013
Bob Butkus



Ocean County Hazards Mitigation Planning

Navigation

Welcome to the Ocean County
2013 Hazard Mitigation Plan
Project Website

About the Project

What is Hazard Mitigation?

Announcements

Project Calendar

Project Partners

Project Documents

Contact the Team

Ocean County Online

Hazard Mitigation Links

FEMA Mitigation Home Page

FEMA Mitigation Planning
Home Page

FEMA Mitigation Grants Home
Page

New Jersey Office of
Emergency Management Home
Page

New Jersey Department of
Environmental Protection
Home Page

Welcome to the Ocean County 2013 Hazard Mitigation Plan Project Website



Photo by Steve Hardy

In the aftermath of Hurricane Sandy, the Hazard Mitigation Plan will help build a safer Ocean County, but we need your help! We want to hear your disaster-related stories and get your feedback as we work toward developing an approved Hazard Mitigation Plan. Throughout the planning process, use the SUBMIT A COMMENT OR IDEA button (at left) to share your thoughts, ideas, photos, and stories with us. Your participation strengthens the plan and, in turn, your community.



Ocean County HMP

Today Monday, May 20

Showing events after 5/20.

[Look for earlier events](#)

Showing events until 6/30. [Look for more](#)

Recent Announcements

[Public & Stakeholder Meetings on May 14th & 20th, 2013](#)

Public Open Houses will be held for Ocean County community members to provide input to the Ocean County 2013 Hazard Mitigation Plan. Residents, local officials, industry, academia, and others are ...

Posted May 1, 2013, 2:10 PM by Christine Caggiano

<http://www.oceancountyhmp.com/>

Rt. 37 at Mean High Water



Post-Tropical Cyclone Sandy

Dates: 10/22 - 10/30 2012

Maximum Wind Speed: 105 mph

Minimum Pressure: 940 mb

US Landfall Category:

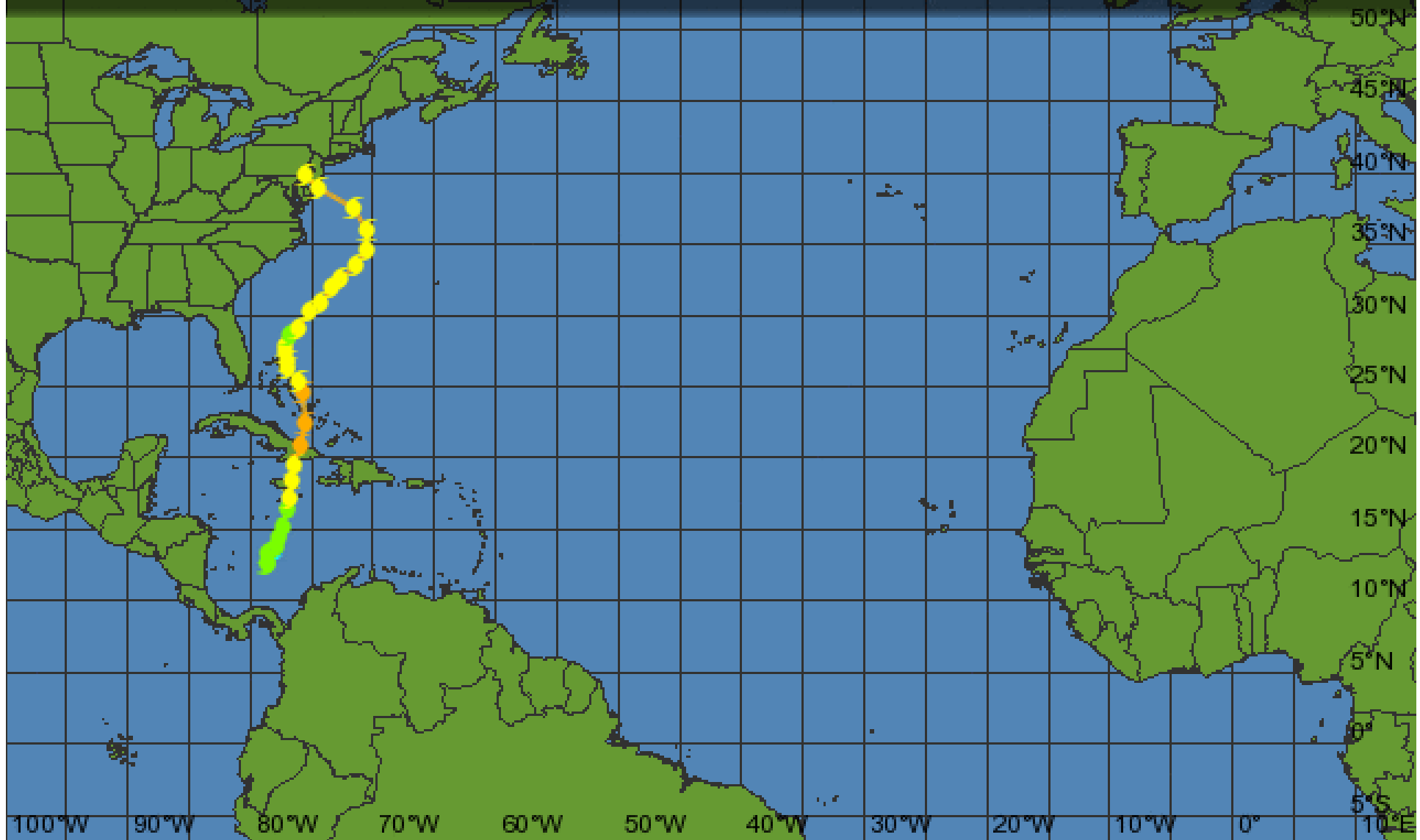
Deaths:

Storm Category

Tropical Depression	Tropical Storm	Category 1	Category 2	Category 3	Category 4	Category 5
< 39 mph	39-73 mph	74-95 mph	96-110 mph	111-130 mph	131-155 mph	156+ mph



Weather Underground
wunderground.com





Rt 37 plus 1ft Sea Level Rise (2050)



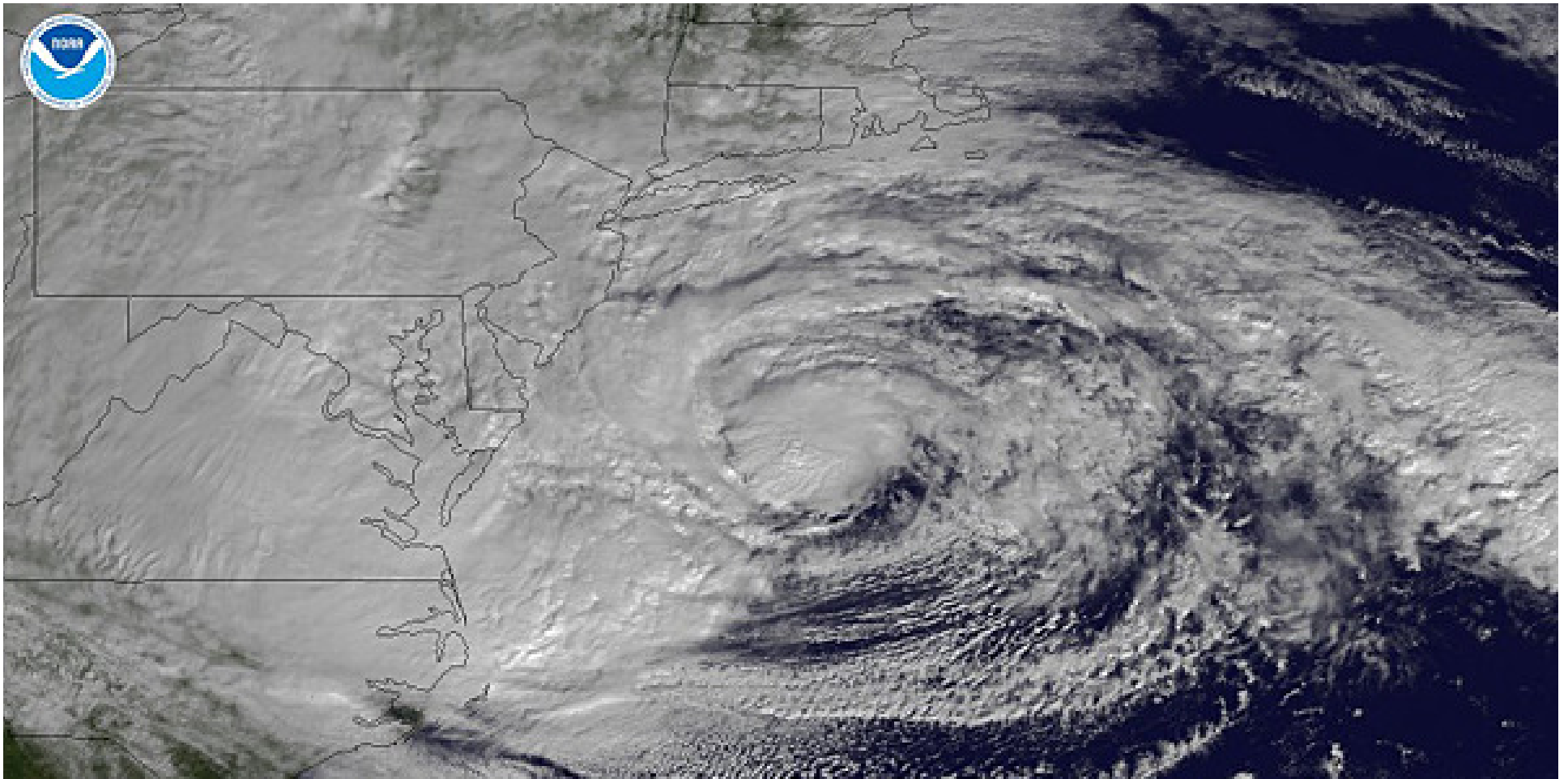
Rt 37 plus 3ft Sea Level Rise (2100)



Rt. 72 at mean High Water



Sandy 10/29/2012





Rt 72 at 1ft Sea Level Rise (2050)



Rt 72 at 3ft Sea Level Rise (2100)

