

TOGETHER NORTH JERSEY.

Climate Change Preparedness in NJ: Leading Practices and Policy Priorities

May 22, 2013

Presented by: Lucy Vandenberg,
Executive Director, PlanSmart NJ

plan**smart** nj
better**land use**
better**lives**

1 Connecting People, Places, and Potential.

What Activities Are Currently Underway in Community & Regional Planning in NJ?

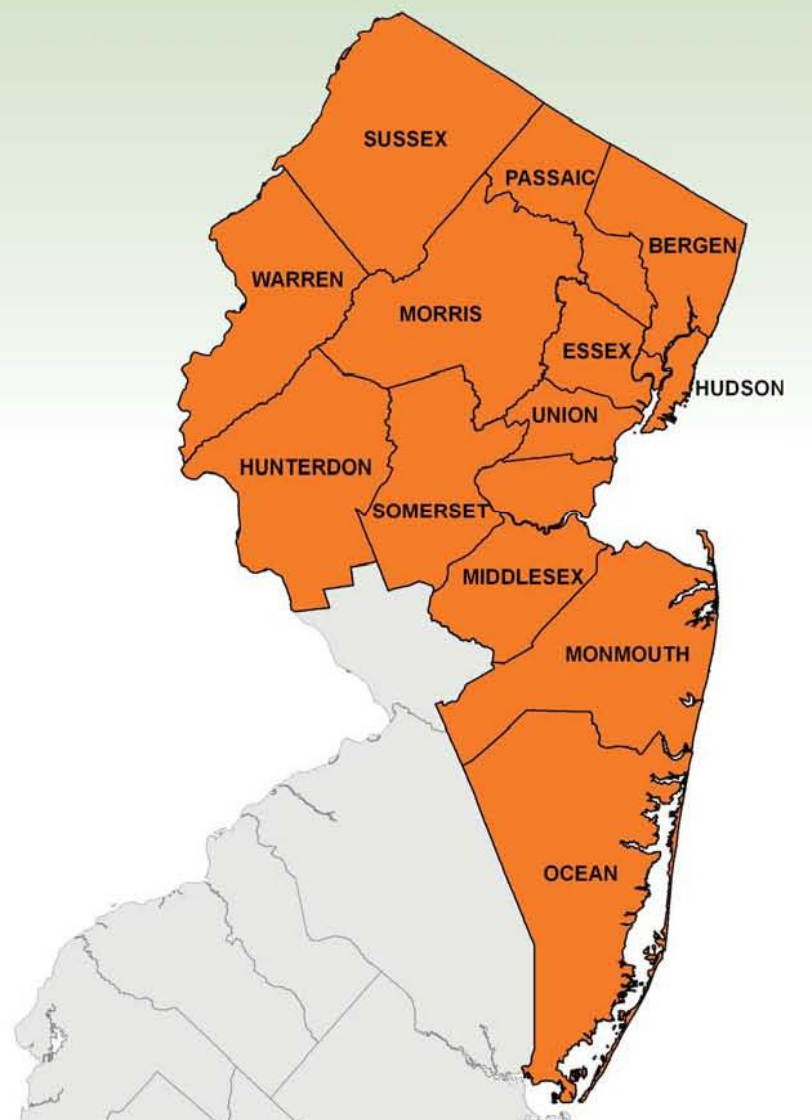


What is Together North Jersey?

- Voluntary partnership of jurisdictions, agencies, organizations and other stakeholders in the 13-county north Jersey planning region
 - Provides a collaborative framework for regional planning as part of Sustainable Communities Regional Planning Grant
 - Together North Jersey members sign an MOU agreeing to work together
- Primary Work Products
 - Regional Plan for Sustainable Development (RPSD)
 - 15 Local Demonstration Projects
 - Capacity-building, education and technical assistance



Planning Region



13 Counties

- Bergen
- Essex
- Hudson
- Hunterdon
- Middlesex
- Monmouth
- Morris
- Ocean
- Passaic
- Somerset
- Sussex
- Union
- Warren

5 Cities

- Elizabeth
- Jersey City
- Newark
- New Brunswick
- Paterson

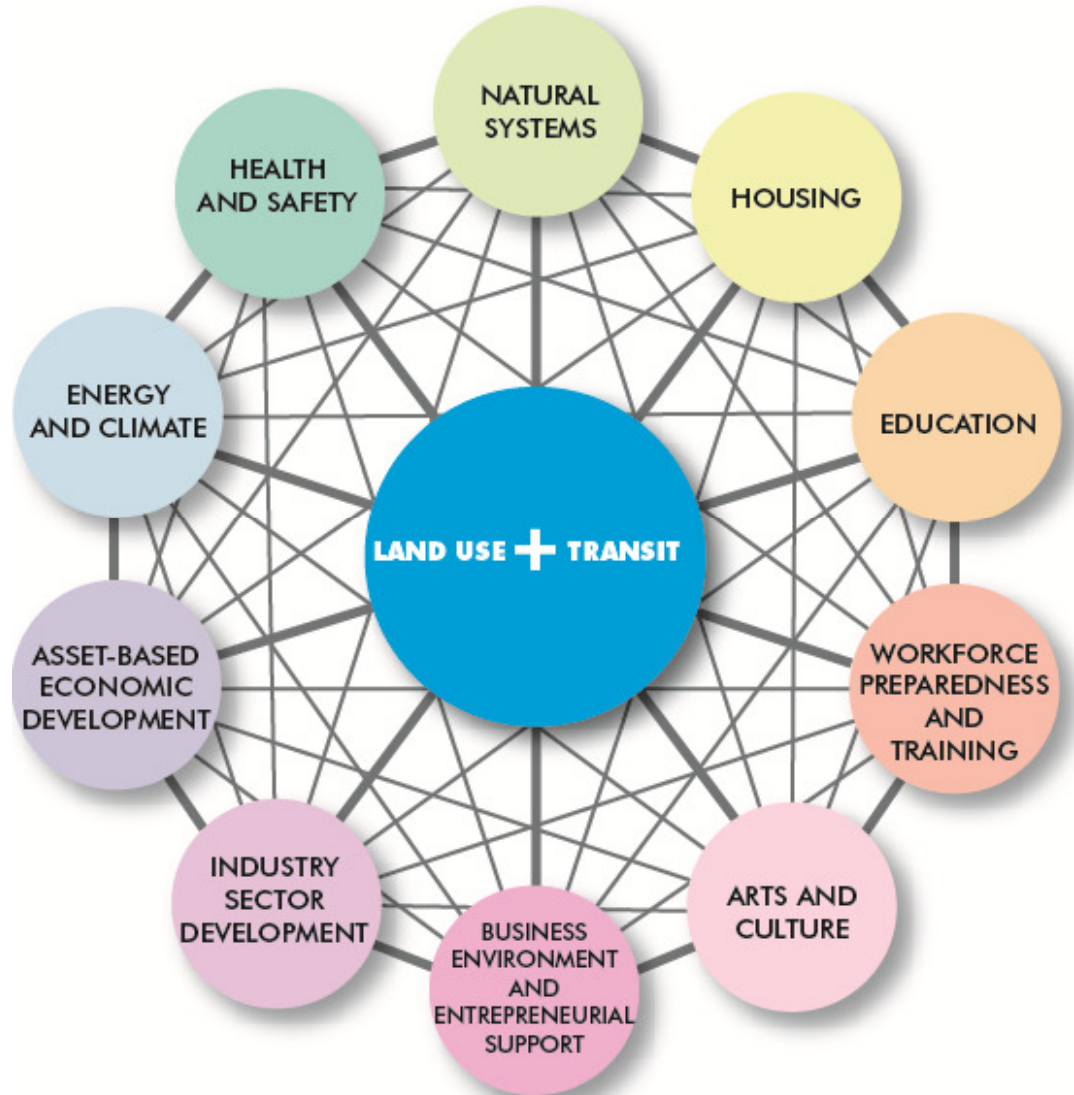
Management Structure



By the Numbers: 475+ interested parties “tuned in;” 150+ stakeholders participating on standing committees; 45 counties, municipalities and NGOs have signed a Partnership Agreement; 37 members participating on steering committee, including 10 project team members

RPSD Work Plan

- Baseline Assessment
 - 12 Topics
- Scenario Planning
- Fair Housing & Equity Assessment (FHEA)
- Regional Comprehensive Economic Development Strategy (CEDS)
- Strategy Development & Action Planning
 - 12 Topics



Regional Action Plan

Economic Competitiveness

- Asset-based economic development
- Industry sector development
- Workforce preparedness
- Business Environment

Livability & Environment

- Land use
- Housing
- Transportation
- Natural systems
- Energy & Climate

Society & Community

- Community health & safety
- Education
- Arts & Culture

Regional Action Plan

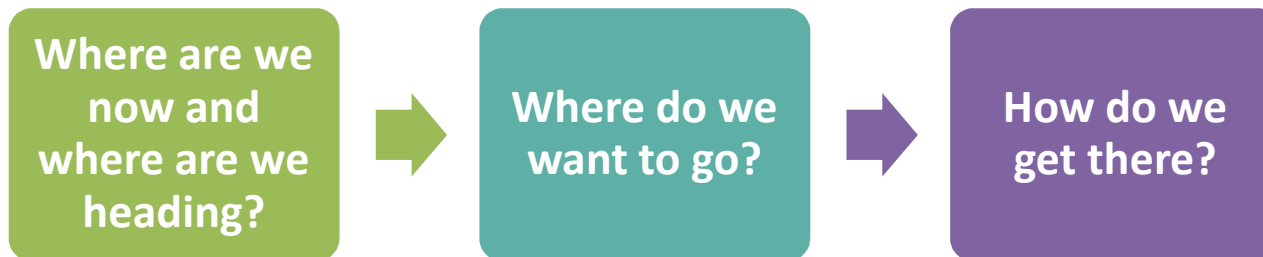
- Problems and challenges
- Assets and strengths
- Goals and Objectives
- Strategies and actions
- Priority projects and investments
- Responsibilities and commitments
- Schedule and timeline
- Process to measure and monitor progress



Public and Stakeholder Engagement

- Steering Committee, standing committees, partnership groups
- Public workshops, small group meetings, other events
- Social media, surveys

- Phase 1: Project Initiation
- Phase 2: Plan Development



- Phase 3: Plan Presentation and Endorsement

Working List of Goals & Objectives

- Strengthen the region's economy
- Ensure communities are safe, healthy, great places to live
- Improve everyone's access to opportunity (good jobs, quality public schools, and housing that is reasonably priced)
- Enhance efficiency and conserve land
- Protect and enhance the environment
- Address regional growth issues in a coordinate way

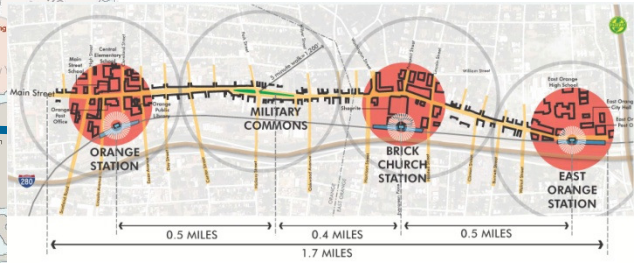
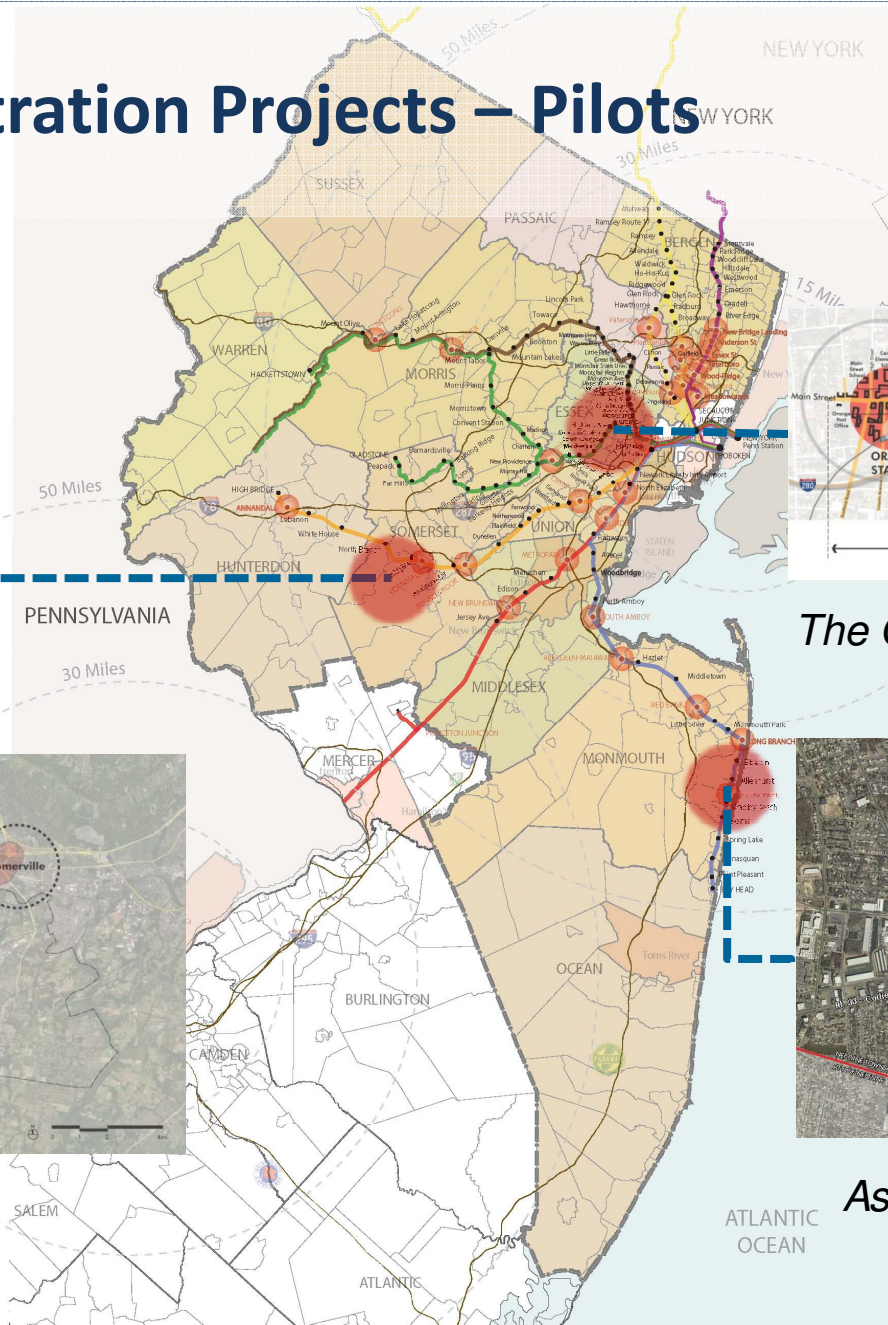


Local Demonstration Project (LDP) Program

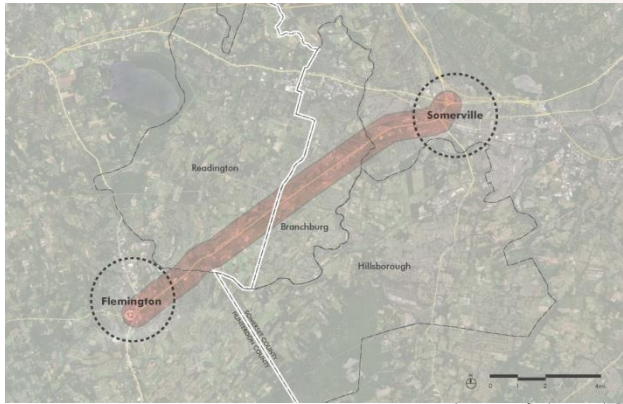
- Designed to create on-the-ground “success stories” and inform plan development
- Projects intended to be both “place-based” and “issue-based”
- Project ideas will be solicited through a *Call for Applications* open to local municipalities, counties, NGOs, and CDCs
- Work to be conducted by project team, NJT transit-friendly planning program on-call consultants and consultants selected through RFQ process



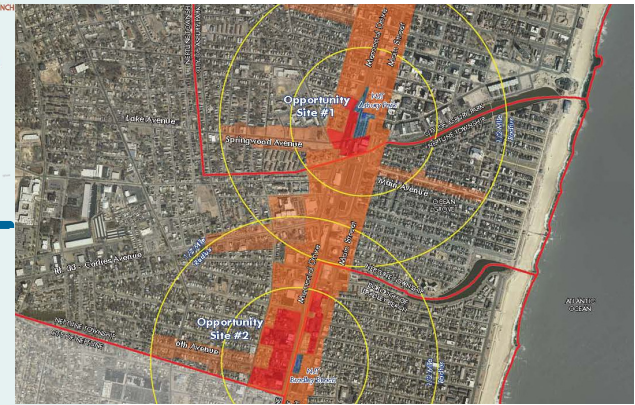
Local Demonstration Projects – Pilots



The Oranges and Newark



Route 202 Corridor



Asbury Park, Bradley Beach, Neptune

Local Government Capacity Grant Program & NGO Micro Grant Programs

- **LGCGP** - Financial and technical assistance to county and municipal members of the Steering Committee
 - Participate actively in meetings
 - Support outreach for scenario planning
 - Provide plans and data when requested
 - Support plan implementation
 - Conduct “Sustainable Communities & Corridors” studies
- **NGO Micro-Grant**
 - Support continuing participation on standing committees and workshops
 - Provide venues and mobilize constituents for outreach events
 - Conduct small neighborhood-focused planning studies



Capacity Building, Technical Assistance & Education

- “Help Desk”
- Library of Resources
- Speakers Bureau
- Annual Program of Training & Education events
- Web-based Data Visualization & Mapping Tool





**What Are Critical Gaps and Needs in the Field of
Community & Regional Planning as it Relates to Climate
Change Preparedness and Resiliency Efforts?**

For More Information:

Jon Carnegie, AICP/PP
Project Director
TOGETHER NORTH JERSEY

Executive Director
Alan M. Voorhees Transportation Center
Bloustein School of Planning and Public
Policy
Rutgers, The State University of New
Jersey
33 Livingston Avenue
New Brunswick, NJ 08901
PH: (848) 932-2840
FAX: (732) 932-3714
carnegie@ejb.rutgers.edu
www.togethernorthjersey.com

RUTGERS

Edward J. Bloustein School
of Planning and Public Policy

Lucy Vandenberg, AICP/PP
TOGETHER NORTH JERSEY
Project Team Member

Executive Director
PlanSmart NJ
118 W. State Street
Trenton, NJ 08608
PH: (609)393-9434
FAX: (609) 393-9452
lvandenberg@plansmartnj.org
www.plansmartnj.org

plansmart nj
betterland use
betterlives