

"I didn't come to stay; I came to make a difference." Governor Parris N. Glendening, Jan. 2003



AP Photo/D on Wright

A Long and Distinguished Career in the State of Maryland

Chair, Maryland Parks & Recreation Commission, 2023 to present

Chair, Maryland 250 Commission, 2023 to present

Executive Visiting Prof., Carey Business School, Johns Hopkins Univ.: 2018 to present

Governor of Maryland: 1995 to 2003

Prince George's County Executive: 1982 to 1994

Prince George's County Council Member: 1974 to 1982; Chair: 1979 to 1981

Hyattsville City Council Member: 1973 to 1974

Associate Professor of Government and Politics, Univ. of Maryland: 1972 to 1995

Assistant Professor of Government and Politics, Univ. of Maryland: 1967 to 1972

An Intergovernmental View
of American Government



Pragmatic Federalism

Parris N. Glendening • Mavis Mann Reeves

POY Public Official of the Year
Parris N. Glendening

Governor

2000 • Tina Trenkner



HARVARD Kennedy School
ASH CENTER
for Democratic Governance
and Innovation

HARVARD KENNEDY SCHOOL NEWSLETTER SIGNUP REGISTER TO VOTE

PROGRAMS PUBLICATIONS FOR STUDENTS FELLOWSHIPS NEWS AND EVENTS

HOME / NEWS /

Award: Smart Growth and Neighborhood Conservation

NEWS & EVENTS

January 1, 2000

Ash in the News

INNOVATIONS IN AMERICAN GOVERNMENT AWARDS

Ash Features

Communiqué Magazine

- AWARD WON: 2000 Winner
- AWARDEE: Smart Growth and Neighborhood Conservation
- DESIGNEE: State of Maryland

Events

Former Md. Gov. Glendening says strong ag is essential to smart growth

By [Admin](#) · May 19, 2011

Crossposted from [Farmland Preservation Report](#).

Originally written by [Bob Heuer](#)

Buy-in from farmland owners on suburbia's edge can accelerate efforts to create compact, walkable communities in metropolitan regions nationwide. So says Parris Glendening, president of Smart Growth America's Leadership Institute. This Washington-based non-profit agency helps local governments implement strategies that target housing and transportation investment near jobs, shops and schools.

Stable urban-edge farm economies will encourage urban reinvestment by acting as a market-based firewall to impede suburbia's outward march, according to Glendening—a national leader for smart growth during two terms as governor of Maryland, serving from 1995 to 2003.

The Glendening administration created a number of innovative incentives for local governments to encourage more compact patterns of development. Maryland's Rural Legacy Program, one of Glendening's most successful programs, has preserved large blocks of agricultural and natural land. Less successful was a law that targeted state assistance to "priority funding areas"—i.e. urbanizing locales that met smart growth criteria.

"I used to say the best tool against sprawl is a prosperous agricultural community," Gov. Glendening recalls. "People who are opposed to sprawl often don't understand the importance of farmers





**The Planet--Volume 6 (1999)
November 1999 (no. 9) Solving Sprawl**

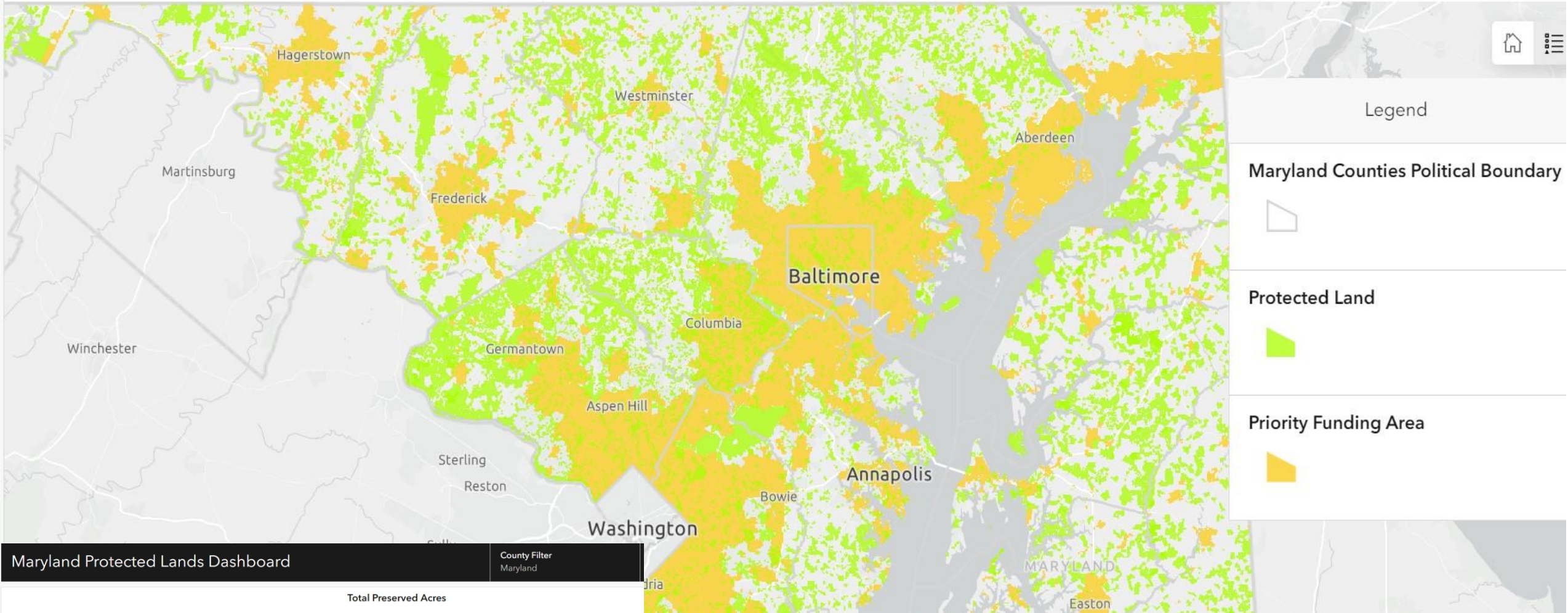
Open Space Protection State Ranking:

- 1. Maryland**
- 2. New Jersey**
- 3. Illinois**
- 4. Oregon**
- 5. Colorado**
- 6. Michigan**
- 7. Montana**
- 8. Ohio**
- 9. Pennsylvania**
- 10. California**

Land-use Planning State Ranking:

- 1. Oregon**
- 2. Vermont**
- 3. Maryland**
- 4. Georgia**
- 5. Washington**
- 6. Tennessee**
- 7. Maine**
- 8. Hawaii**
- 9. California**
- 10. Rhode Island**

Protected Lands in Maryland



Maryland Protected Lands Dashboard County Filter Maryland

Total Preserved Acres

1,859,329

Jug Bay Glendening Nature Preserve, Anne Arundel County, MD

