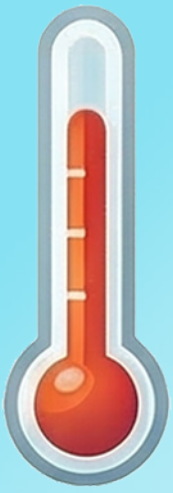


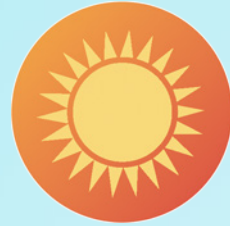
# New Jersey's Warming Climate: Key Indicators and Local Impacts



**4°F (2.2°C)**

Total warming in New Jersey since 1900

The 10 hottest years on record have occurred since 1990.



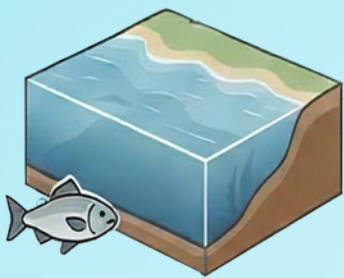
**More Extreme Heat Days**

Days exceeding 90°F (32.2°C) are more frequent.



**Warm Nights**

Nights staying above 70°F (21.1°C) are more frequent.



**Warming Coastal Waters**

Sea surface temperatures off the northeastern U.S. have risen at a rate of about 0.6°F (0.33°C) per decade between 1982 and 2016, three times faster than the global rate.

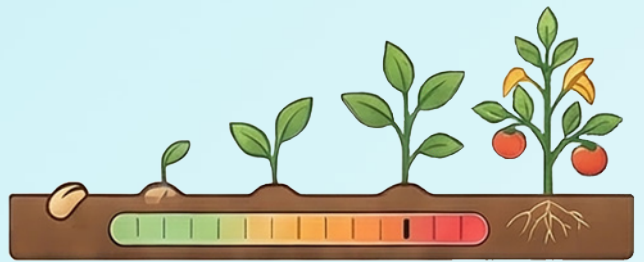
**The Arrival of Earlier Spring**

Biological markers, such as earlier leaf-out and blooming of lilacs, confirm spring is arriving sooner, which extends the pollen season and may disrupt the timing of seasonal events.



**Shrinking Lake Ice and Milder Winters**

Lakes are freezing later and thawing earlier. Fewer extreme cold events and warming winter temperatures decrease the likelihood of snowfall.



**Longer Growing Seasons**

Warming temperatures across the Northeast are extending the growing season, which may necessitate changes in crop choices and agricultural practices.

## Sector Impacts



**Fisheries**

**Warmer Coastal Waters**

Shifts in fish species distribution and marine biodiversity



**Agriculture**

**Earlier Spring / Longer Growing Season**

Changes in food production and crop management



**Public Health**

**Extreme Heat / Warm Nights**

Increased risk of heat exposure and respiratory illness



**Economy**

**Milder Winters**

Loss of revenue for winter tourism and recreation businesses



**RUTGERS-NEW BRUNSWICK**  
New Jersey Climate Change Resource Center



Learn more at [njclimateresourcecenter.rutgers.edu](http://njclimateresourcecenter.rutgers.edu)